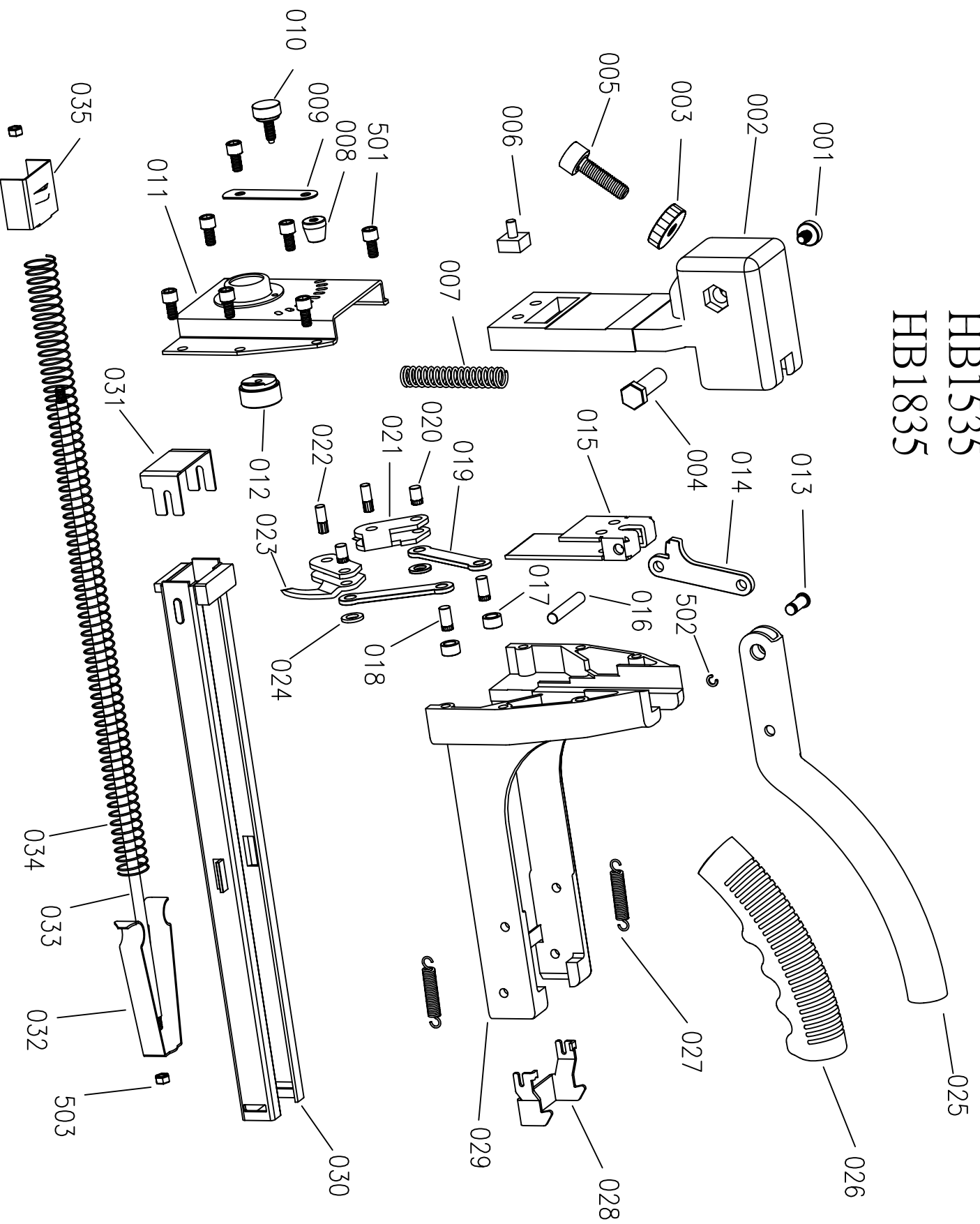


HB1535  
HB1835



ITEM : HB3515 、 HB3518

NO : 1

No.	Part#	Description	Q'ty	Remark
001	A00400501	PIVOT SCREW	1	
002	A00400101	PLOT	1	
003	A00400801	ADJUSTMENT NUT	1	
004	A00400401	PIVOT NUT	1	
005	A00400701	ADJUSTMENT SCREW	1	
006	A00402501@	BLOCK UNIT	1	
007	A00400601	SPRING	1	
008	A00402301	NUT	1	
009	A00402101	LINK	1	
010	A00402201	SCREW	1	
011	A00401901@	FRONT PLATE	1	
012	A00402001	BLOCK	1	
013	A00402701	SHAFT	1	
014	A00400301	LINK	1	
015	A00403601	DRIVER	1	
016	A00402801	ROD	1	
017	A00403001	BUSHING	2	
018	A00403301	ROD	2	
019	A00402901	LINK	2	
020	A00403201	ROD	2	
021	A00500501	LEFT CLINCHER	1	HB3518
021	A00403501	LEFT CLINCHER	1	HB3515
022	A00403701	ROD	2	
023	A00500401	RIGHT CLINCHER	1	HB3518
023	A00403401	RIGHT CLINCHER	1	HB3515
024	A00403101	WASHER	2	
025	A00400201	HANDLE	1	

ITEM : HB3515 、 HB3518

NO : 2

No.	Part#	Description	Q'ty	Remark
026	A00403901	HANDLE GLOVE	1	
027	A00404001	SPRING	2	
028	A00401701	BRACKET	1	
029	A00400901	MAGAZINE SEAT	1	
030	A00500101@	MAGAZINE	1	HB3518
030	A00401001@	MAGAZINE	1	HB3515
031	A00500601	COVER	1	HB3518
031	A00402601	COVER	1	HB3515
032	A00401401	STOPPER	1	

033	A00401501	ROD	1	
034	A00401601	SPRING	1	
035	A00500301	PUSHER	1	HB3518
035	A00401301	PUSHER	1	HB3515
501	BAC06050102	HEX.SOC.HD.BLOT	7	M5*0.8-10
502	BAF10402	E-RING	1	ø4
503	BAD01051	LOCK NUT	2	M5*0.8